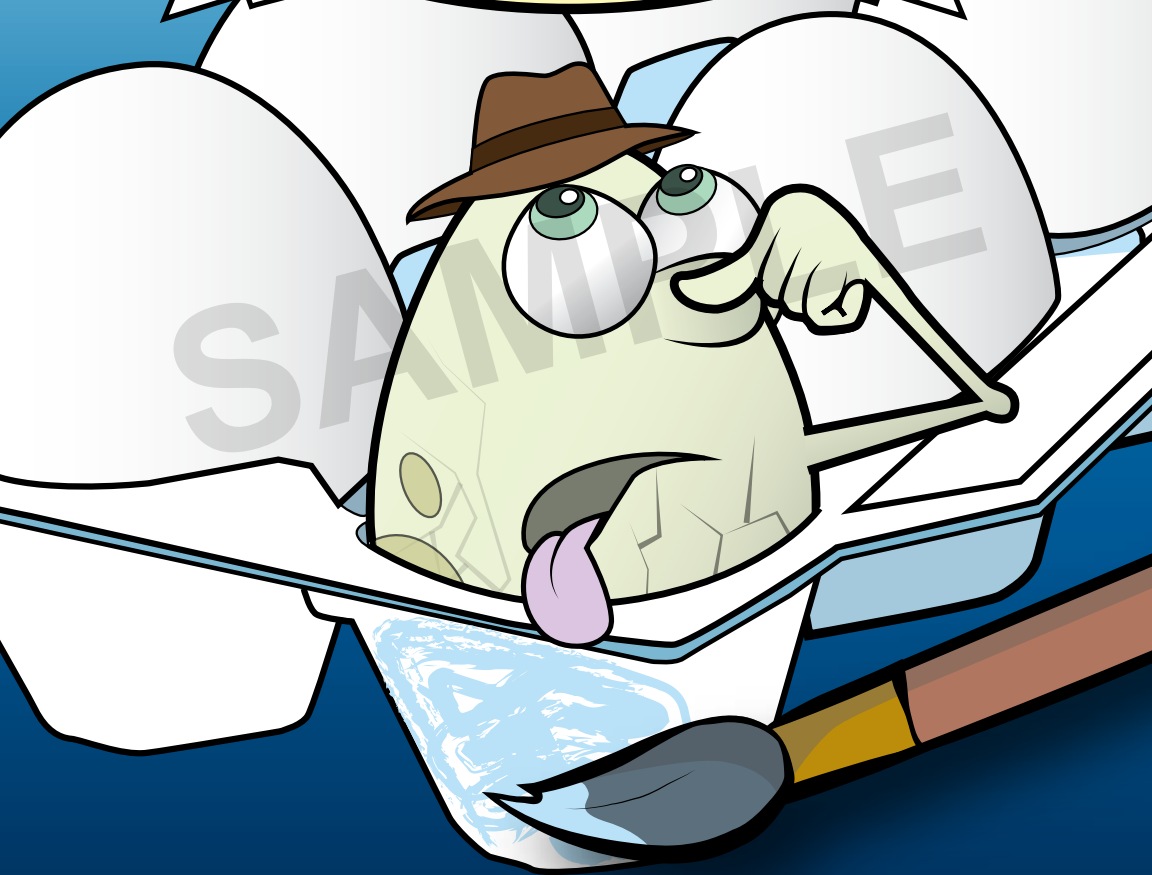
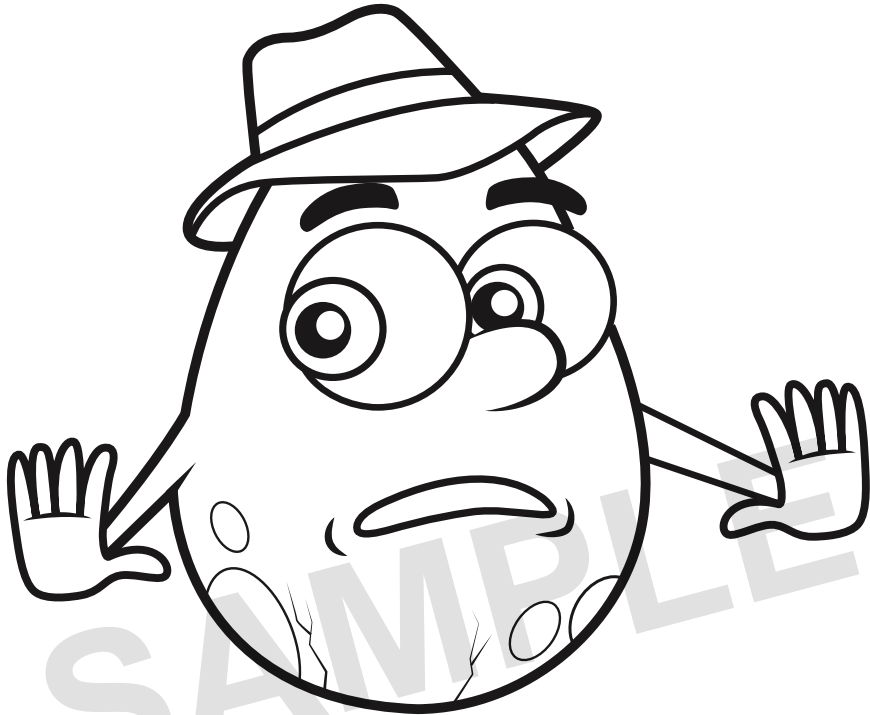


NATURAL GAS SAFETY

WATERCOLOR PAINT BOOK



**Be A Smell Detective
Use YOUR nose — THAT'S HOW YOU'LL KNOW**

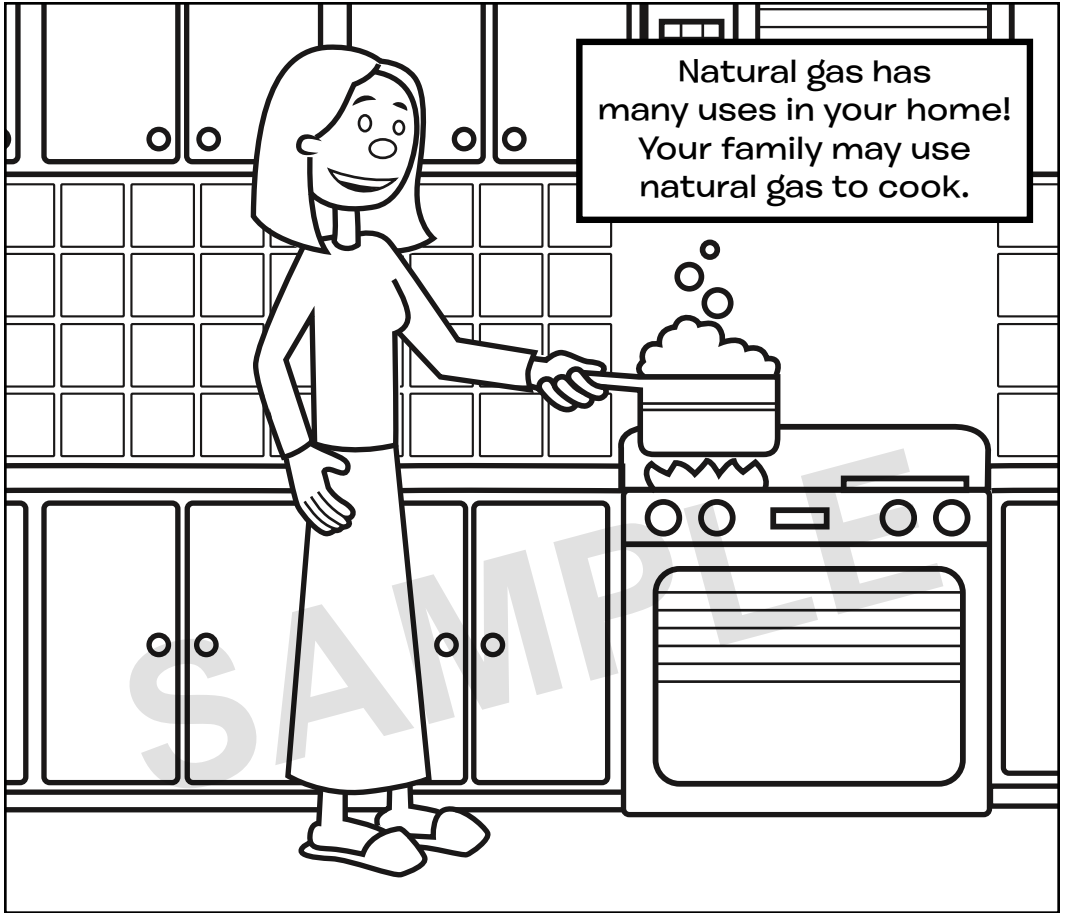


Have you ever smelled a funny smell around your house? Something that smells just like me, a rotten egg? That smell may be a warning, and if you smell it you can help keep your family safe around natural gas.

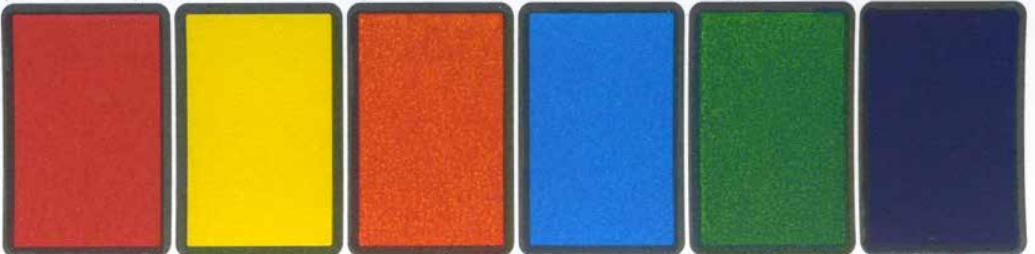
Dip a cotton swab or paintbrush in water. Use with "Magic Paint Palette" to paint away! Palette de Couleurs Magiques. • Trempez un coton-tige ou un pinceau



dans l'eau en utilisant la Palette de Couleurs Magiques. • Sumerja una esponja o una de algodón un agua. Use con "Paleta de Pintura Mágica" para pintar!

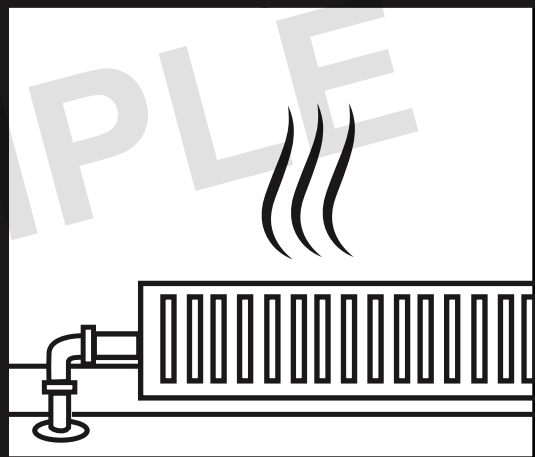
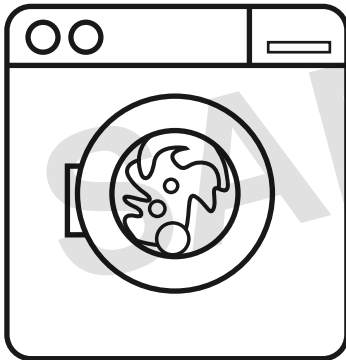
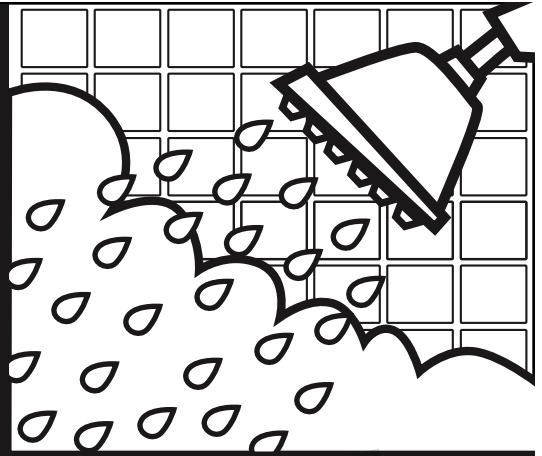


Dip a cotton swab or paintbrush in water. Use with "Magic Paint Palette" to paint away! Palette de Couleurs Magiques. • Trempez un coton-tige ou un pinceau

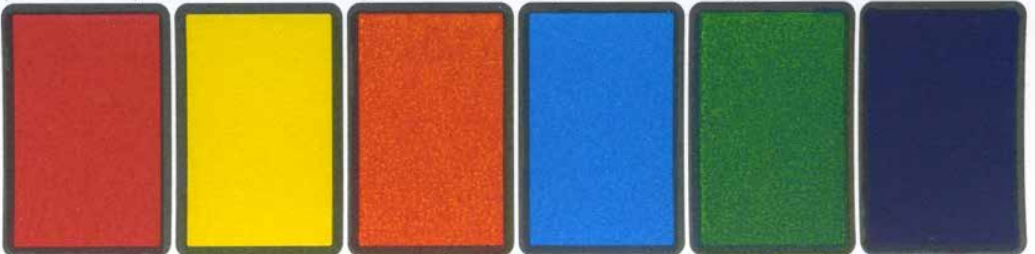


dans l'eau en utilisant la Palette de Couleurs Magiques. • Sumergir una esponja o una de algodón en agua. Use con "Paleta de Pintura Mágica" para pintar!

It can also be used for heating water, drying clothes, and keeping homes warm in the winter.

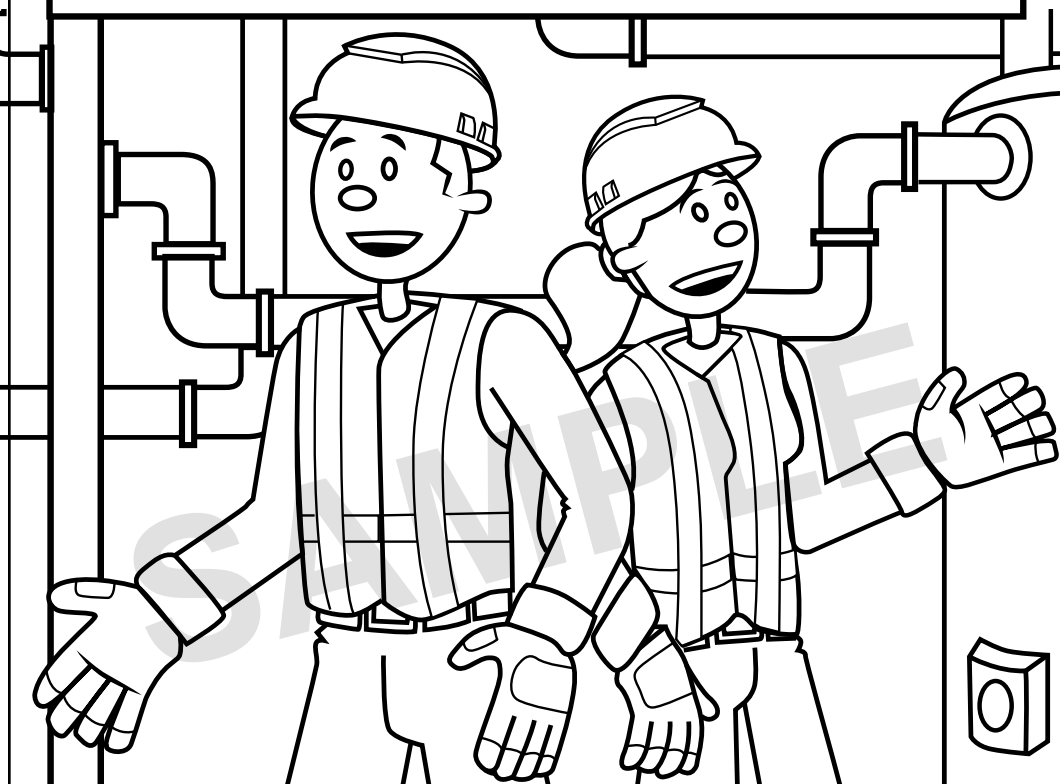


Dip a cotton swab or paintbrush in water. Use with "Magic Paint Palette" to paint away! Palette de Couleurs Magiques. • Trempez un coton-tige ou un pinceau

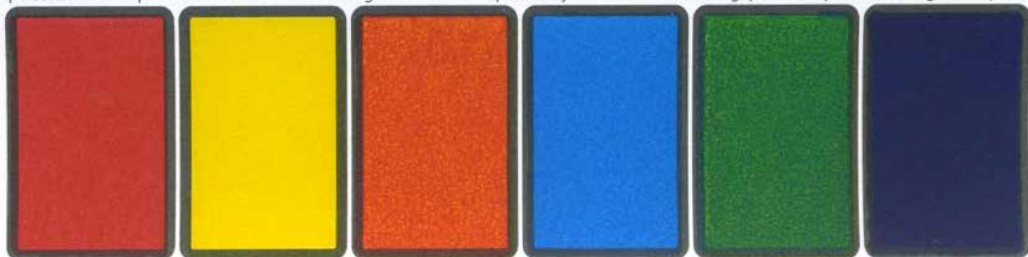


dans l'eau en utilisant la Palette de Couleurs Magiques. • Sumerja una esponja o una de algodón un agua. Use con "Paleta de Pintura Mágica" para pintar!

Natural gas is brought to your home by your local gas utility through underground pipes.



Dip a cotton swab or paintbrush in water. Use with "Magic Paint Palette" to paint away! Palette de Couleurs Magiques. • Trempez un coton-tige ou un pinceau

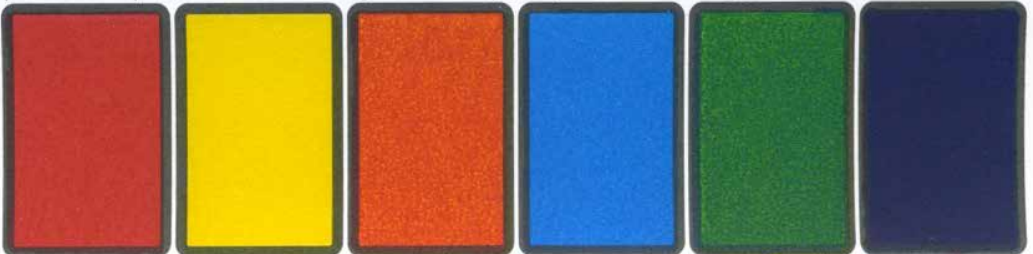


dans l'eau en utilisant la Palette de Couleurs Magiques. • Sumerja una esponja o una de algodón un agua. Use con "Paleta de Pintura Mágica" para pintar!

It doesn't happen very often, but if natural gas leaks from the pipes it can be very dangerous. Utilities add a rotten egg smell to the gas so you will know if there is a leak.

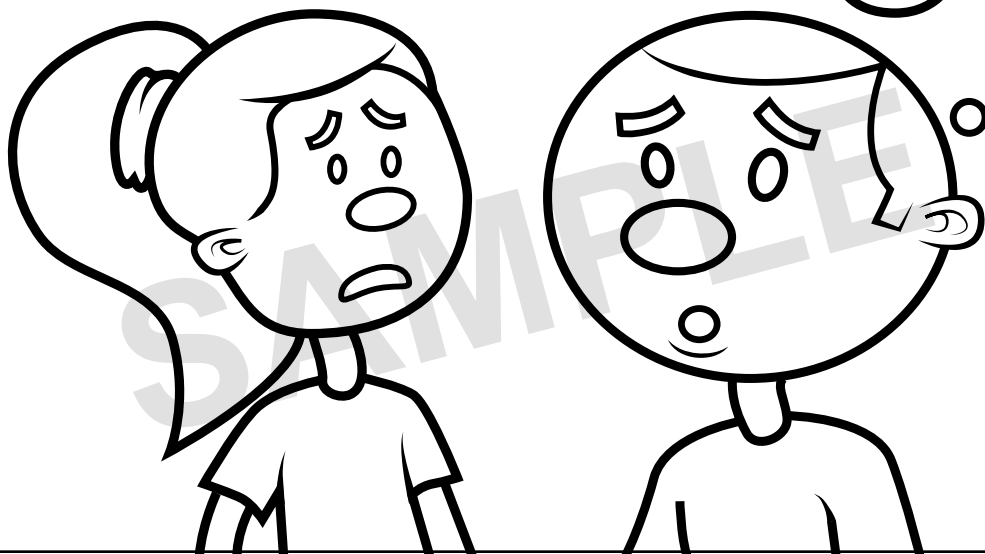
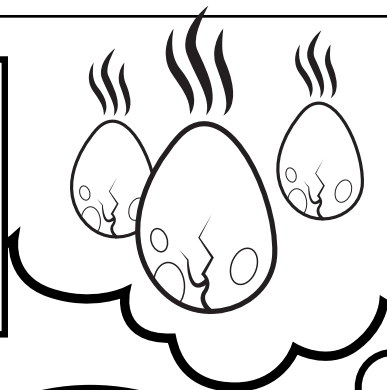


Dip a cotton swab or paintbrush in water. Use with "Magic Paint Palette" to paint away! Palette de Couleurs Magiques. • Trempez un coton-tige ou un pinceau



dans l'eau en utilisant la Palette de Couleurs Magiques. • Sumerja una esponja o una de algodón un agua. Use con "Paleta de Pintura Mágica" para pintar!

If you smell that rotten egg smell, tell an adult right away. If there is a gas leak, everyone should leave the house. Don't stop to turn off lights, touch or anything electrical just get out quick

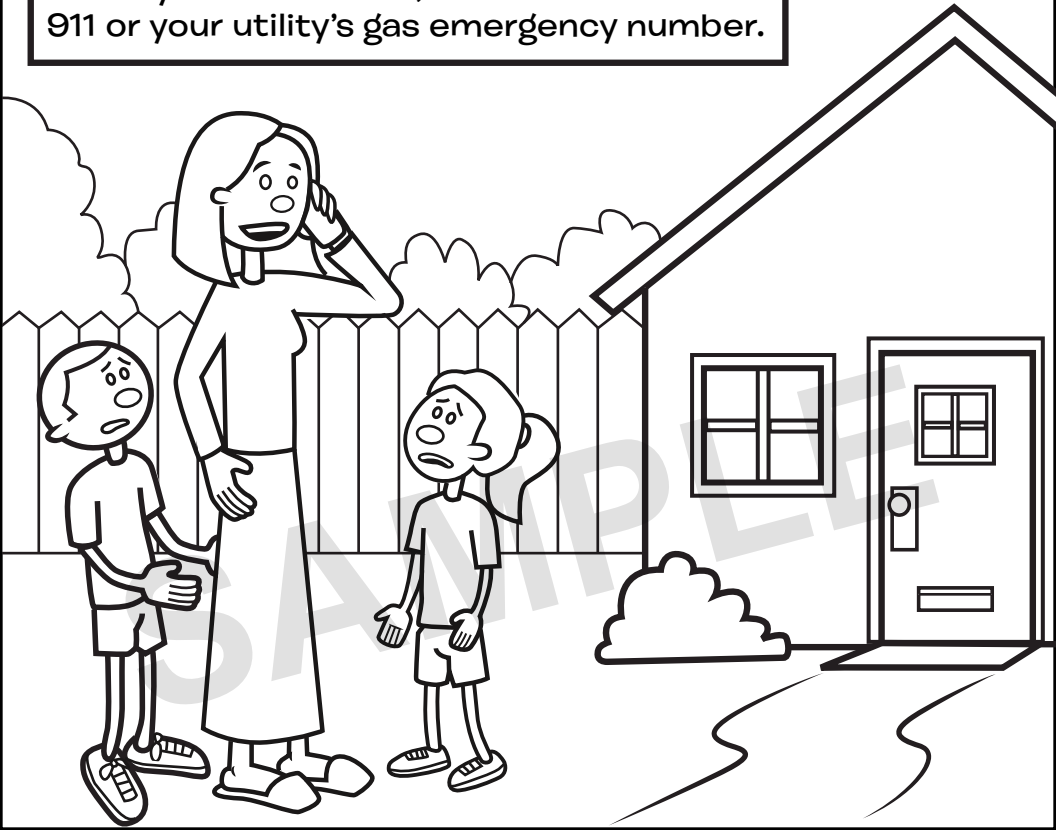


Dip a cotton swab or paintbrush in water. Use with "Magic Paint Palette" to paint away! Palette de Couleurs Magiques. • Trempez un coton-tige ou un pinceau

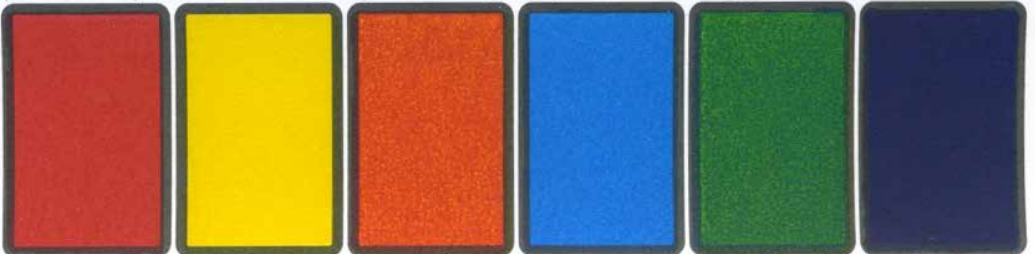


dans l'eau en utilisant la Palette de Couleurs Magiques. • Sumerja una esponja o una de algodón un agua. Use con "Paleta de Pintura Mágica" para pintar!

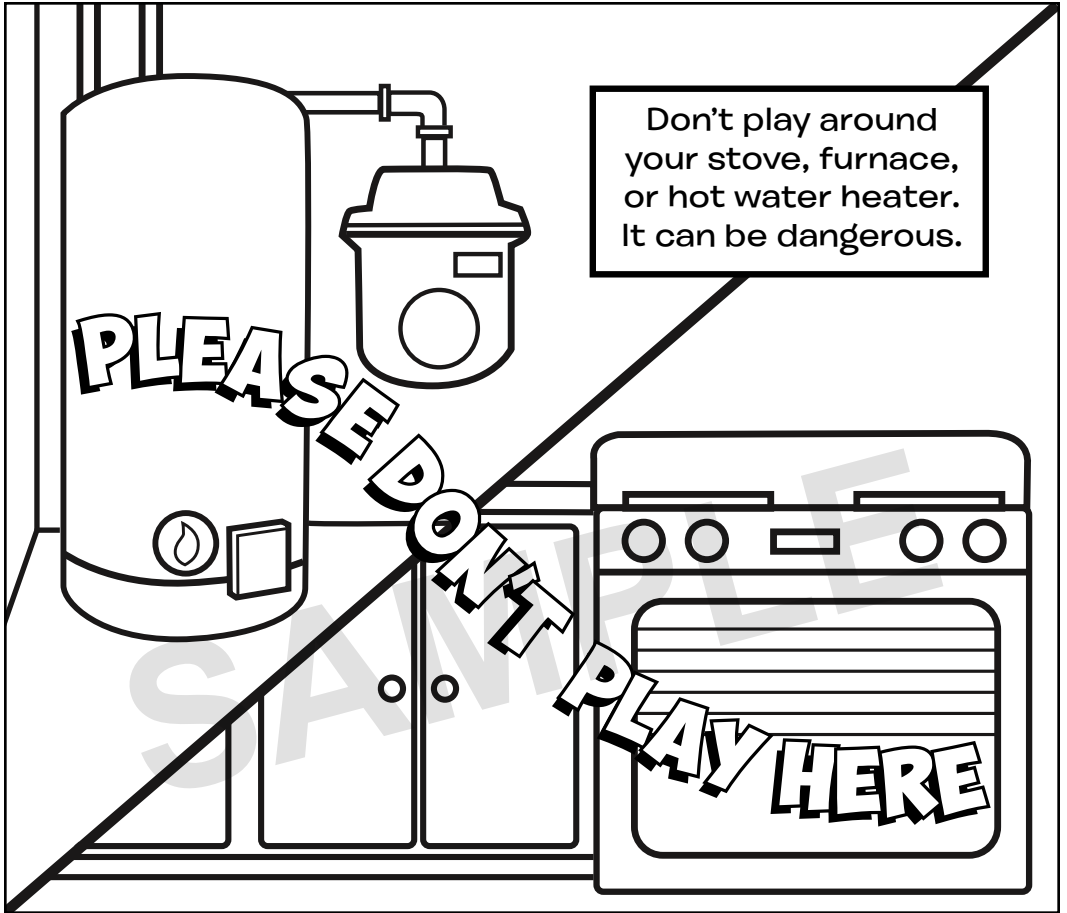
Once you are outside, an adult should call 911 or your utility's gas emergency number.



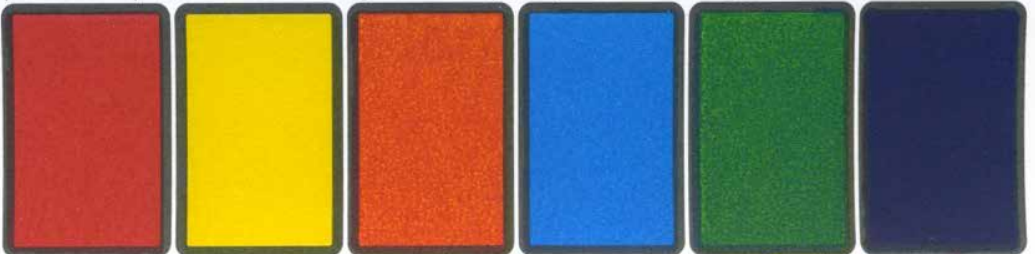
Dip a cotton swab or paintbrush in water. Use with "Magic Paint Palette" to paint away! Palette de Couleurs Magiques. • Trempez un coton-tige ou un pinceau



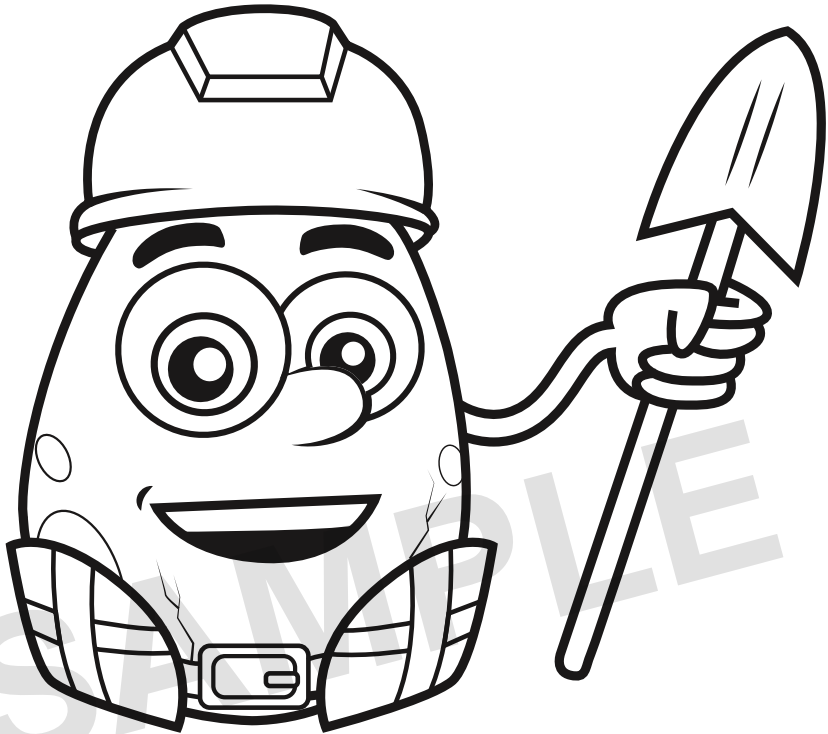
dans l'eau en utilisant la Palette de Couleurs Magiques. • Sumergir una esponja o una de algodón un agua. Use con "Paleta de Pintura Mágica" para pintar!



Dip a cotton swab or paintbrush in water. Use with "Magic Paint Palette" to paint away! Palette de Couleurs Magiques. • Trempez un coton-tige ou un pinceau

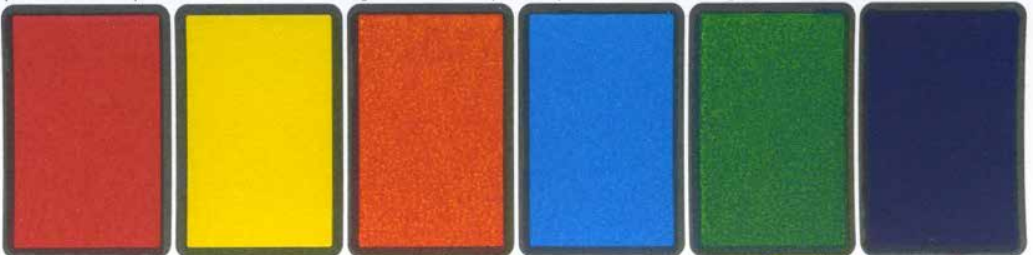


dans l'eau en utilisant la Palette de Couleurs Magiques. • Sumergir una esponja o una de algodón en agua. Use con "Paleta de Pintura Mágica" para pintar!



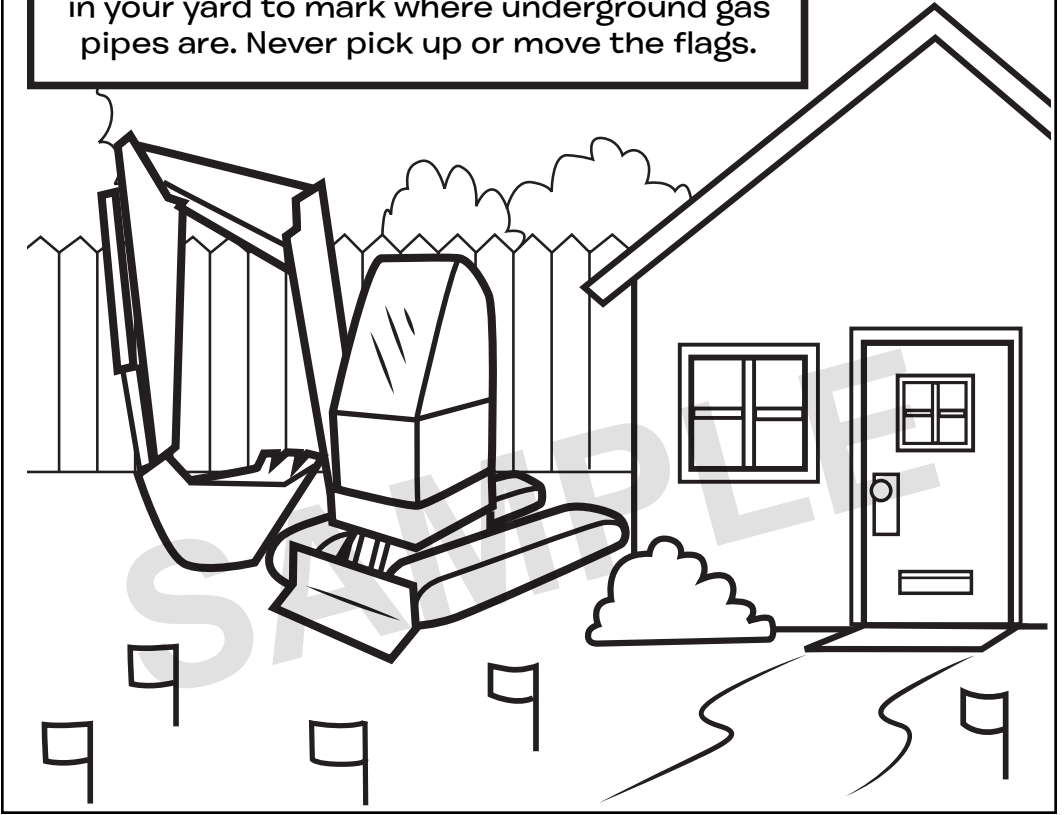
If your parents are working on a project that requires digging, they should call 811 or your utility company before they start.

Dip a cotton swab or paintbrush in water. Use with "Magic Paint Palette" to paint away! Palette de Couleurs Magiques. • Trempez un coton-tige ou un pinceau

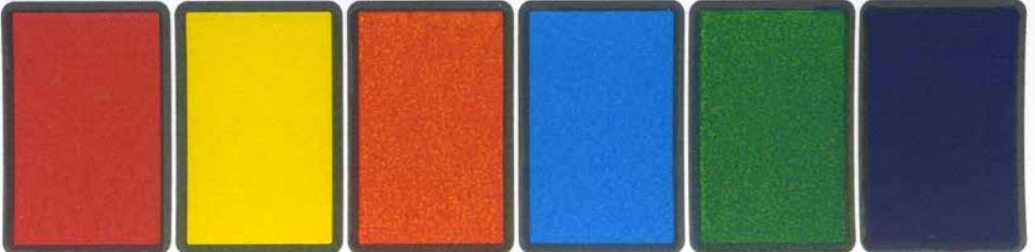


dans l'eau en utilisant la Palette de Couleurs Magiques. • Sumerja una esponja o una de algodón un agua. Use con "Paleta de Pintura Mágica" para pintar!

Your utility company may come and put flags in your yard to mark where underground gas pipes are. Never pick up or move the flags.

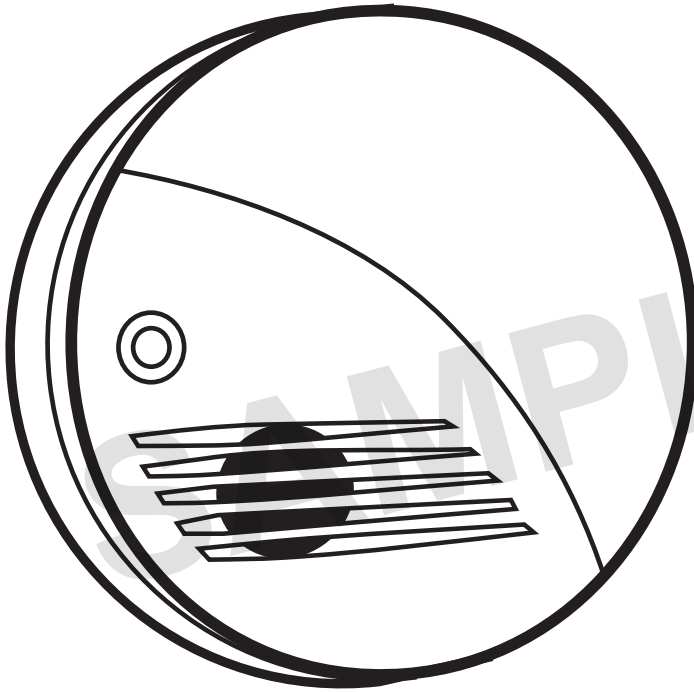


Dip a cotton swab or paintbrush in water. Use with "Magic Paint Palette" to paint away! Palette de Couleurs Magiques. • Trempez un coton-tige ou un pinceau



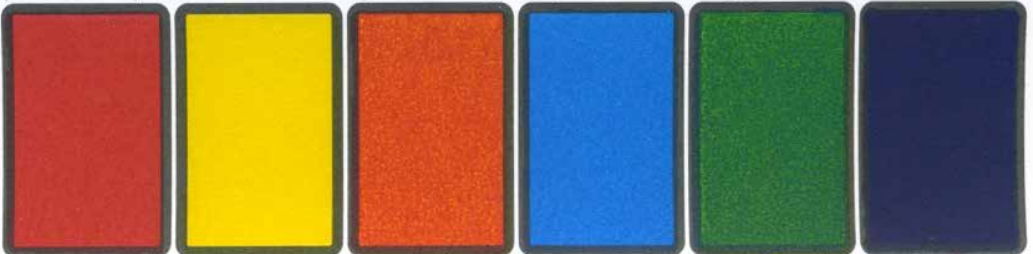
dans l'eau en utilisant la Palette de Couleurs Magiques. • Sumerja una esponja o una de algodón un agua. Use con "Paleta de Pintura Mágica" para pintar!

All homes should have a carbon monoxide detector. If yours goes off you should leave the house right away and have an adult call 911 once you are outside.



BEEP!
BEEP!
BEEP!

Dip a cotton swab or paintbrush in water. Use with "Magic Paint Palette" to paint away! Palette de Couleurs Magiques. • Trempez un coton-tige ou un pinceau

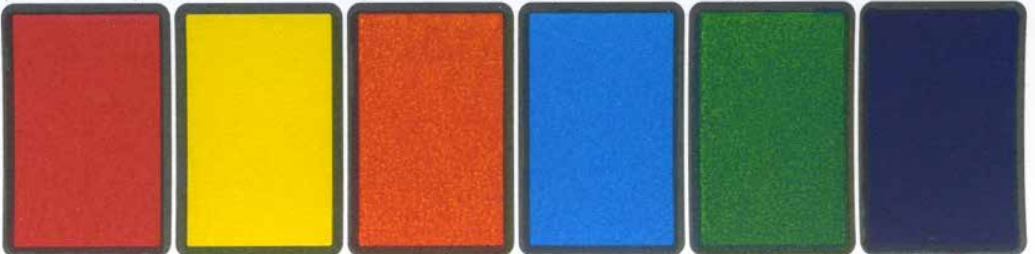


dans l'eau en utilisant la Palette de Couleurs Magiques. • Sumerja una esponja o una de algodón un agua. Use con "Paleta de Pintura Mágica" para pintar!



It's important to stay safe around natural gas!
So be a smell detective and if you smell gas tell a grown up!

Dip a cotton swab or paintbrush in water. Use with "Magic Paint Palette" to paint away! Palette de Couleurs Magiques. • Trempez un coton-tige ou un pinceau



dans l'eau en utilisant la Palette de Couleurs Magiques. • Sumergir una esponja o una de algodón un agua. Use con "Paleta de Pintura Mágica" para pintar!



This book is published by Project Energy Savers. For information about Project Energy Savers, go to www.projectenergysavers.com

Notice: This book was produced by Project Energy Savers™, LLC. Neither Project Energy Savers™, LLC nor any person acting on behalf of Project Energy Savers™, LLC makes any warranty, expressed or implied, with respect to the use of any information disclosed in this booklet, or assumes any liability with respect to the use of, or for damages resulting from the use of, any information contained in this booklet. The recommendations, statistics, and information provided are strictly for the purposes of informing the user.